

Unit # 2 Review!

ANSWER KEY!

Multiple Choice

Identify the choice that best completes the statement or answers the question.

- 1) Who was one of the first people to identify and see cork cells?
 - A) Anton van Leeuwenhoek
 - B) Robert Hooke
 - C) Matthias Schleiden
 - D) Rudolf Virchow
- 2) Which type(s) of microscopes can produce three-dimensional images of the surface of cells?
 - A) transmission electron microscopes
 - B) scanning electron microscopes
 - C) both A and B
 - D) neither A nor B
- 3) Which term refers to cells having different jobs in an organism?
 - A) multicellular
 - B) cell specialization
 - C) levels of organization
 - D) unicellular
- 4) You will NOT find a cell wall in which of these kinds of organisms?
 - A) plants
 - B) animals
 - C) fungi
 - D) all of the above
- 5) Which of the following is NOT a principle of the cell theory?
 - A) Cells are the basic units of life.
 - B) All living things are made of cells.
 - C) Very few cells reproduce.
 - D) All cells are produced by existing cells.

- 6) Which organelles supply energy to the cell?
 - a. ribosomes
 - b. centrosomes
 - c. mitochondria
 - d. vacuoles

- 7) Which organelles contain enzymes that break down old cell parts?
 - a. centrosomes
 - b. lysosomes
 - c. vacuoles
 - d. chloroplasts

- 8) Which organelles are unique to plant cells?
 - a. ribosomes
 - b. vacuoles
 - c. chloroplasts
 - d. centrosomes

- 9) Which process occurs inside the chloroplasts?
 - a. detoxification
 - b. ribosome assembly
 - c. photosynthesis
 - d. protein synthesis

- 10) The role of ribosomes in cells is for
 - a. detoxification
 - b. ribosome assembly
 - c. photosynthesis
 - d. protein synthesis "making"

- 11) Which process is occurring when a vesicle fuses with the cell membrane and releases its contents outside the cell?
 - a. endocytosis
 - b. phagocytosis
 - c. exocytosis
 - d. osmosis

- 12) A key difference between a prokaryotic cell and a eukaryotic cell is the presence of
 - a. a nucleus.
 - b. ribosomes.
 - c. cytoplasm.
 - d. cell membrane.

→ BACK

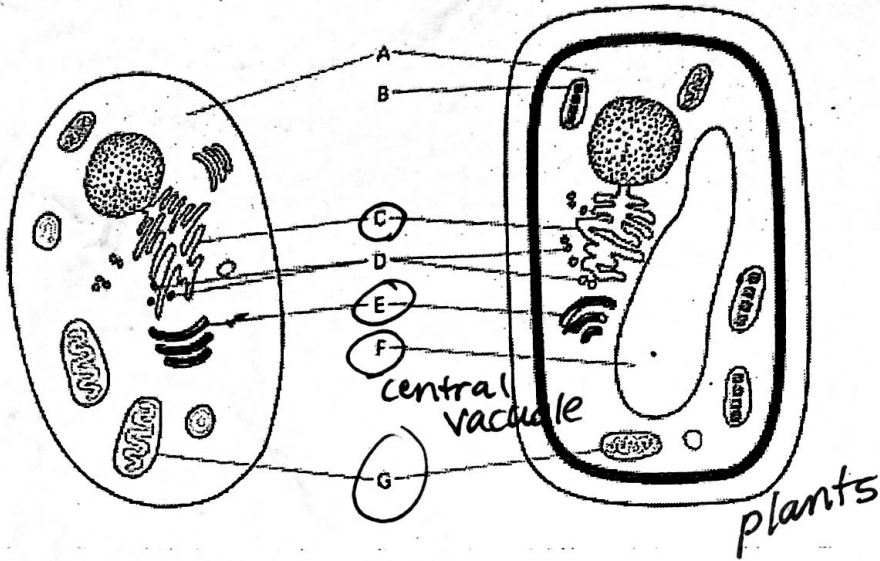


FIG. 3.3

13) Identify the structure labeled G. *Mitochondria*

14) Identify part F and explain its function. Why does the same structure not appear in the cell on the left?

central vacuole → *Storage of Water, nutrient*

Not found in animal cell (on left)

15) Identify structures C, D, and E. *Golgi*

*ER
Smooth
rough*

ribosome